



New Era® Women's Power Long Sleeve Hoodie
LNEA229



With moisture wicking and stretch, you'll feel the power of performance in this hoodie that's also brushed for comfort.

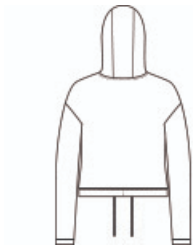
- 4.7-ounce, 91/9 polyester/spandex
- Debossed New Era neck taping
- Heat transfer label for tag-free comfort
- 3-panel hood
- Thumbholes
- High hip hem with cinch drawcords
- Reflective silver heat transfer New Era flag logo on left hem

CARE INSTRUCTIONS

Machine Wash Cold With Like Colors. Do Not Use Fabric Softener. Only Non-Chlorine Bleach When Needed. Tumble Dry Low. Remove Promptly. Cool Iron If Necessary.

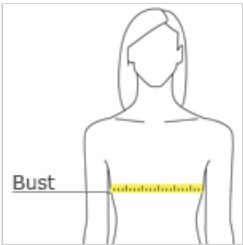


front



back

HOW TO MEASURE



BUST
Measure under the arm and around the fullest part of the bust with arms down, keeping tape horizontal.

SIZE CHART

	XS	S	M	L	XL	2XL	3XL	4XL
Size	2	4/6	8/10	12/14	16/18	20/22	24/26	28/30
Bust	32-34	35-36	37-38	39-41	42-44	45-47	48-51	52-55

COLOR INFORMATION

Please note: PMS code information is shown only when an exact match is available.



Black
PMS BLACK C



Shadow Grey
Heather
PMS COOL GREY
10C